

ENGINEERING PUBLICATION
MOTION CONTROL DIVISION

PRODUCT: NS300 and NS500

SUBJECT: Setting maximum feed speed Pn843 and message RSTMDLFFFF

CATEGORY: Technical Supplement

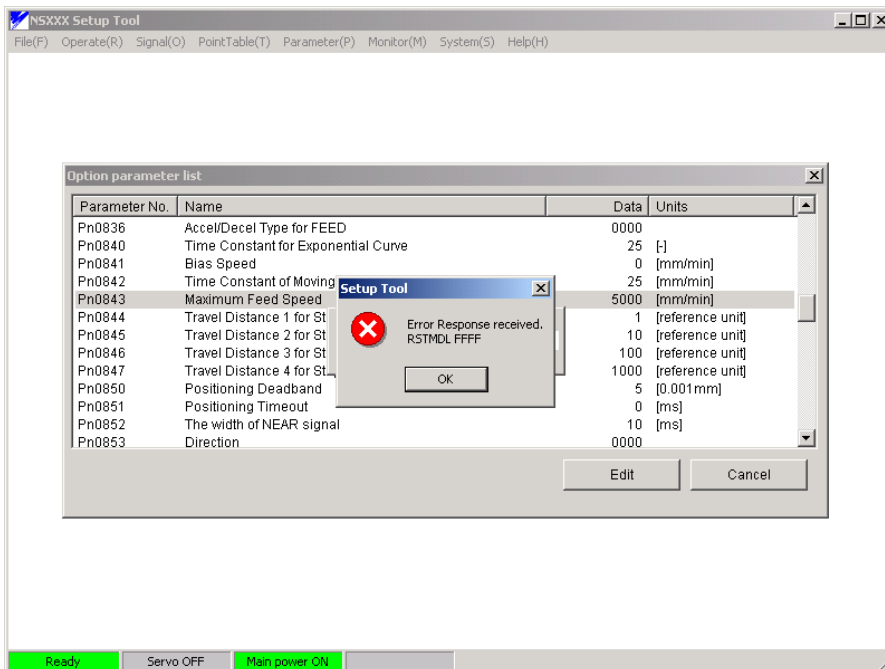
DATE: 2/9/05

DISTRIBUTION: ALL

If the maximum feed speed parameter, Pn843, value is set below any other speed related parameter, the Module Reset Function will not save data to the non-volatile memory on the NS300 or NS500 module.

If a module reset command is issued over the network by SET/READ commands, the NS300 or NS500 will not issue any alarms or warnings on the SGDH display when these parameters are lost.

If a module reset command is issued by NSxxx (version 0.13 and version 1.0) the following screen will appear:



If the maximum feed speed, Pn843, is set below 24000, all remaining speed related parameters values should be checked since most speed related parameters have default values of 24,000.

The following parameters need to be set below the Max Feed Speed value:

In the NSxxx configuration utility these parameters are accessed under the PARAMETER menu in OPTION PARAMETER.

Pn802, Pn803, Pn804, Pn821, Pn824, Pn827, Pn831, Pn834, Pn854, Pn862, Pn873, Pn874, Pn875, Pn876, Pn877, Pn878, Pn879, Pn87A, Pn87B, Pn87C, Pn87D, Pn87E, Pn87F, Pn880, Pn881, Pn882

In the NSxxx configuration utility these parameter are accessed under the POINT TABLE menu in EDIT.

Pn940, Pn941, Pn942, Pn943, Pn944, Pn945, Pn946, Pn947, Pn948, Pn949, Pn94A, Pn94B, Pn94C, Pn94D, Pn94E, Pn94F, Pn950, Pn951, Pn952, Pn953, Pn954, Pn955, Pn956, Pn957, Pn958, Pn959, Pn95A, Pn95B, Pn95C, Pn95D, Pn95E, Pn95F, Pn960, Pn961, Pn962, Pn963, Pn964, Pn965, Pn966, Pn967, Pn968, Pn969, Pn96A, Pn96B, Pn96C, Pn96D, Pn96E, Pn96F, Pn970, Pn971.

When using the EDS sheet, The parameters above are equivalent to the following numbers:

3,4,5,23,26,29,32,35,50,54,71,72,73,74,75,76,77,78,79,80,81,82,83,84,85,86, 143 –192.

If the Parameters are being changed by explicit message, refer to section 4.2 of the DeviceNet user manual for cross referencing parameters to object and attribute numbers. For point table speeds refer to Appendix B.7